

WISETECH GLOBAL GROUP

# LIMA for carriers

Hamburg • Manila • Miami • Singapore

## Management information (SIBIA)

Full transparency across your entire business



SIBIA is designed to capture the data that flows through your Softship applications and to present it in a user-friendly and readable format for analysis and reporting.

### Analysing business performance

SIBIA is the tool that captures and presents the information contained within all your Softship applications. It allows you to quickly identify trends across your business as well as highlighting the risks and opportunities.

An up-to-date overview of business performance is ready accessible and users are able to drill down to the detail for closer analysis. A range of predefined, standard report sheets are

available for instant use but ad-hoc and bespoke report sheets are also easily defined. To make reporting even quicker, the SIBIA dashboard is fully customisable.

### Making it easy

SIBIA takes information from across the company including revenues and costs from all business areas. User-defined data is delivered through a web browser or is accessible via Excel allowing you a



Keeping track of your container liftings

# Management information (SIBIA)

choice of environments in which to work. Information is displayed numerically or graphically.

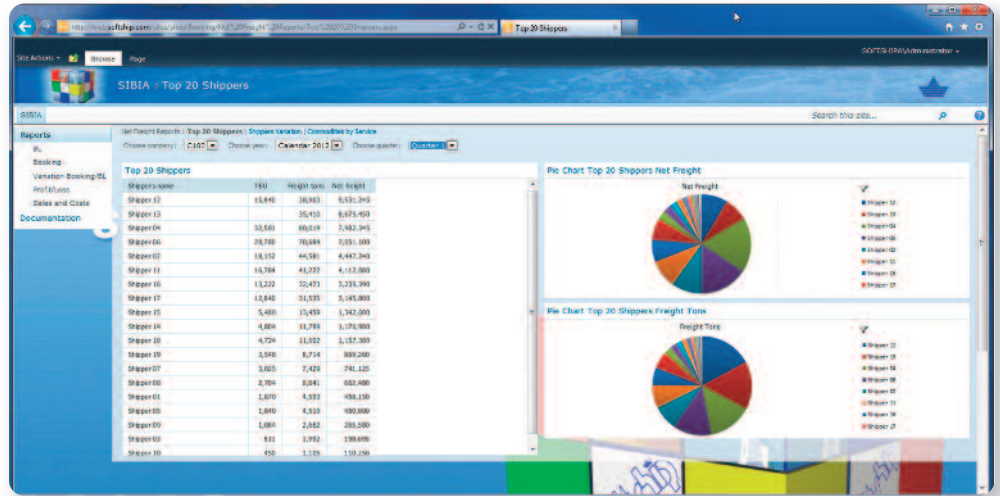
The tool also supports the creation of KPIs and will report business performance against these important indicators.

## Tight integration

SIBIA is tightly integrated with the LIMA suite to ensure that management and operational staff are using identical data. Information is regularly extracted from all LIMA applications including LINE, CMC, VOYCES and AIDA and aggregated into data-cubes for easy access and retrieval.

MS SQL server with an in-built data mining and reporting tool forms the base of SIBIA which eliminates the need for users to purchase additional and expensive data mining software.

Integration is also achieved with MS Sharepoint to deliver controlled and secure access from any global location giving managers the ability to access important business information at any time and from any location.



Your top 20 shippers

## Business Benefits

- Tight integration with the operational systems
- Real-time monitoring of business performance
- Rapid identification of risks and opportunities
- Easy drill-down to locate root cause of business issues
- User-friendly creation of bespoke reports

## Key Features

- Dashboard for management reporting
- Global access anytime, anywhere
- Standard, pre-defined reports included
- Ad-hoc and user-defined reports available
- Extract to Excel, PDF or other formats

Softship Germany  
T +49 (0) 40 89 06 8-0  
E team\_ham@softship.com

Softship Singapore  
T +65 6 227 24 97  
E team\_sin@softship.com

Softship USA  
T +1 954 606 5672  
E team\_mia@softship.com

©Softship GmbH 2019

www.softship.com